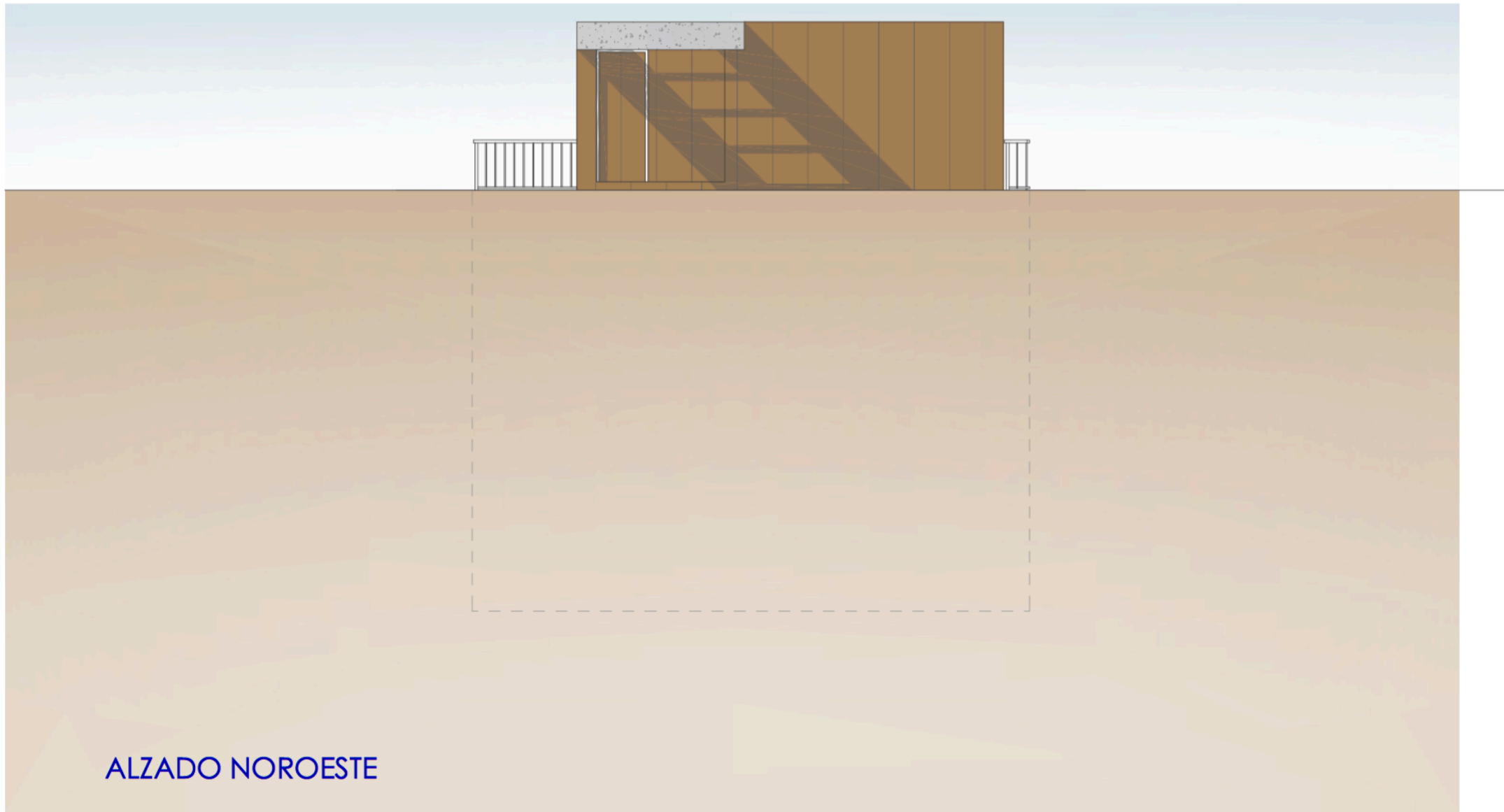
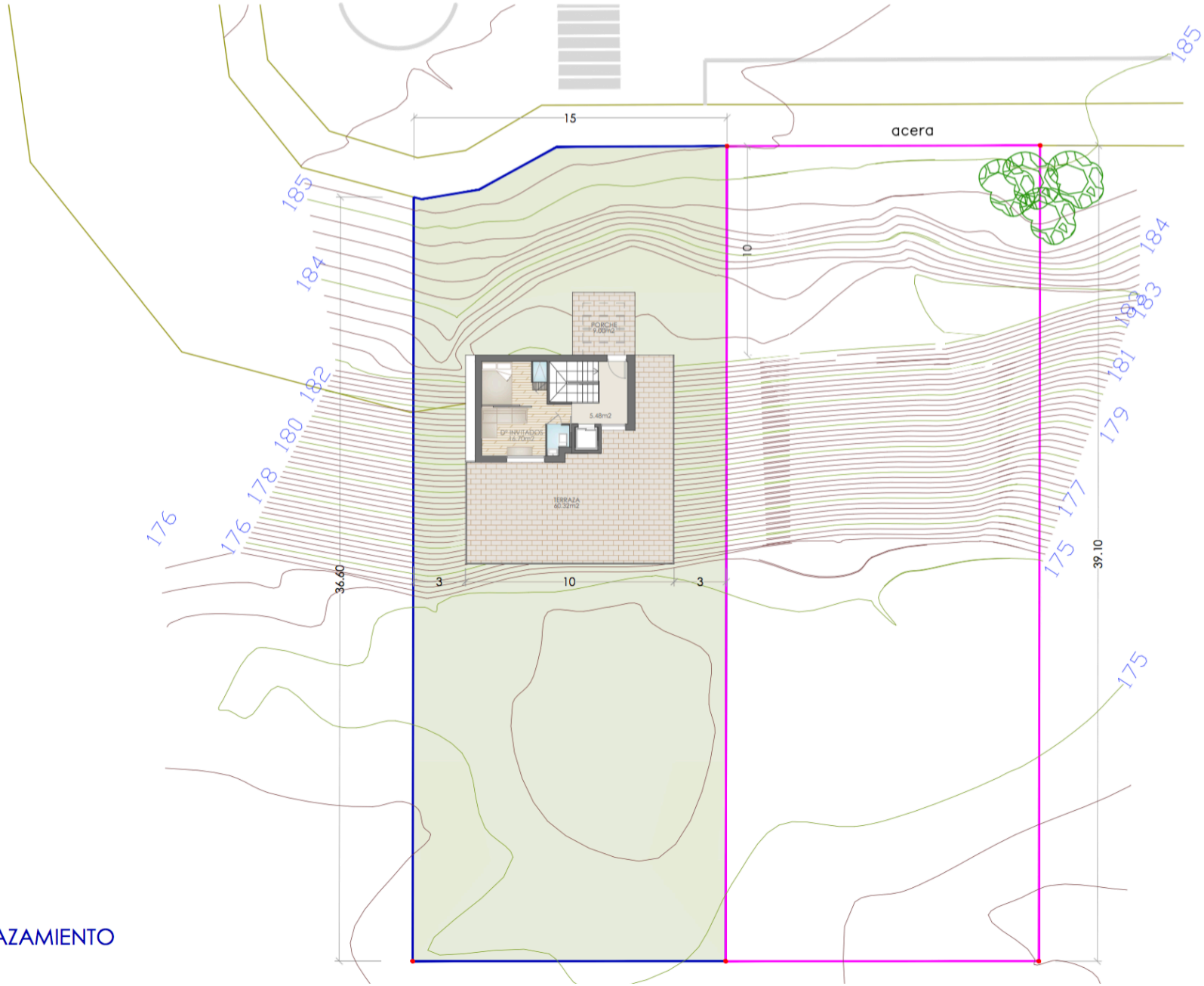


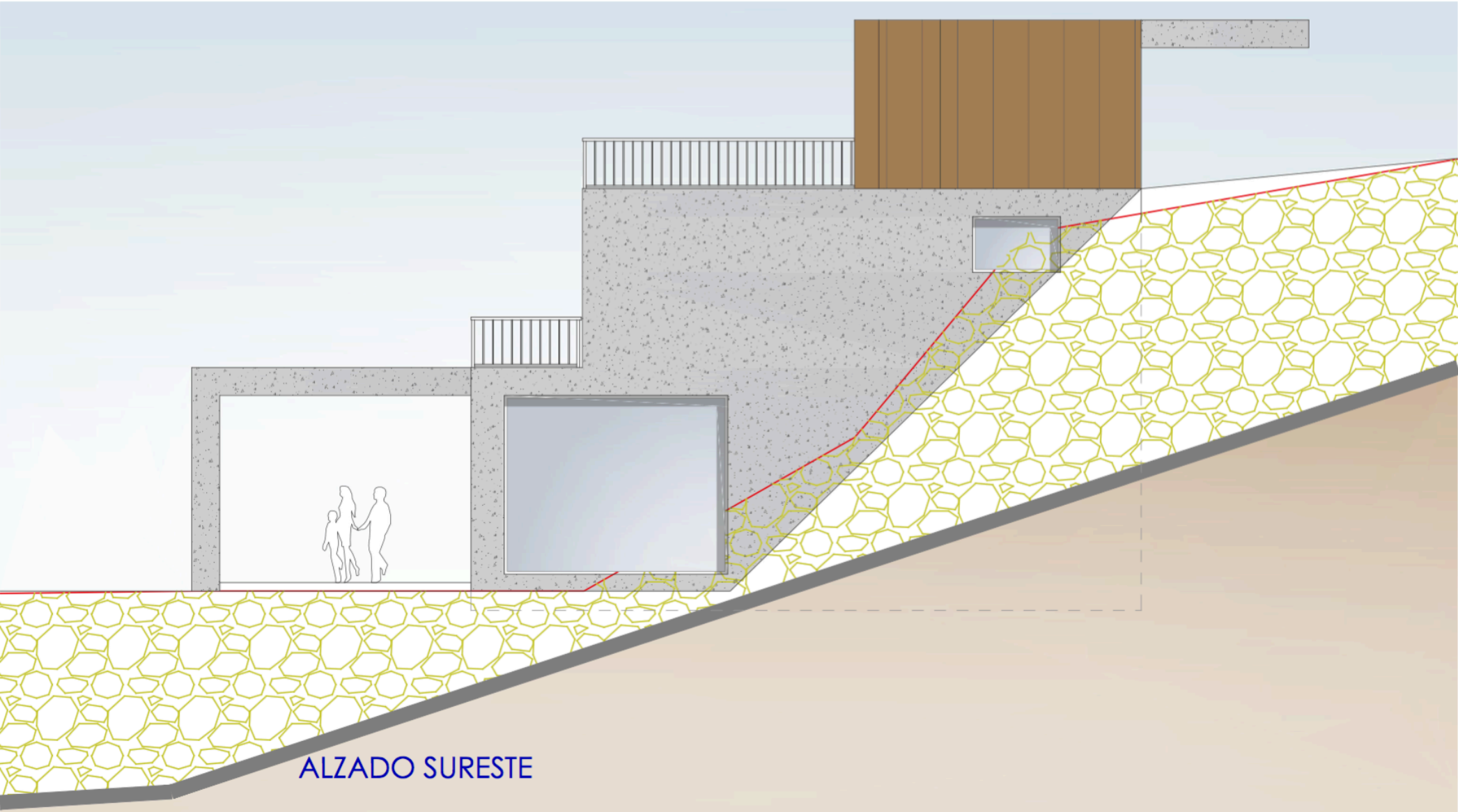
ALZADO NOROESTE



ALZADO NOROESTE

EMPLAZAMIENTO

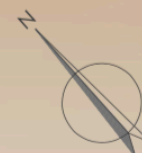




ALZADO SURESTE

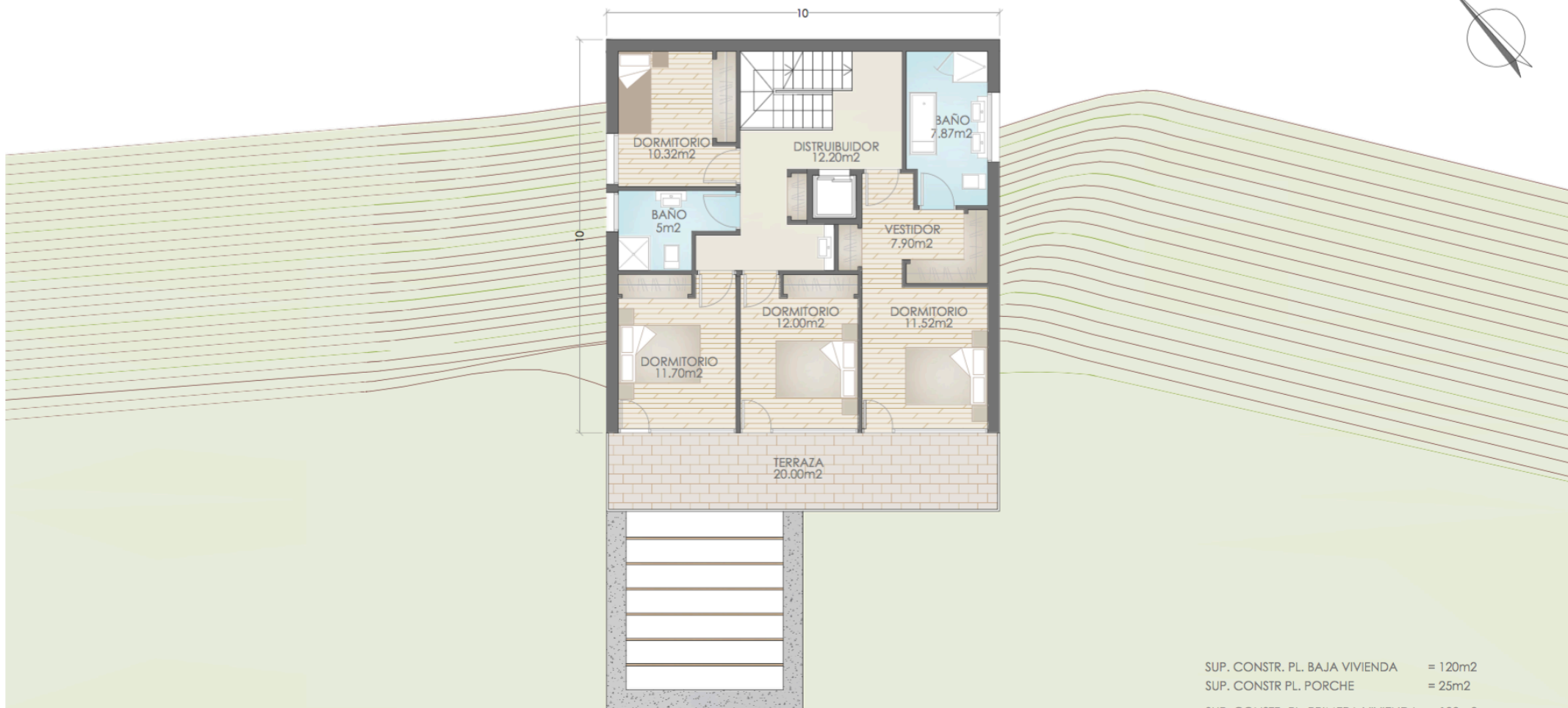
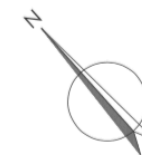


ALZADO SUROESTE



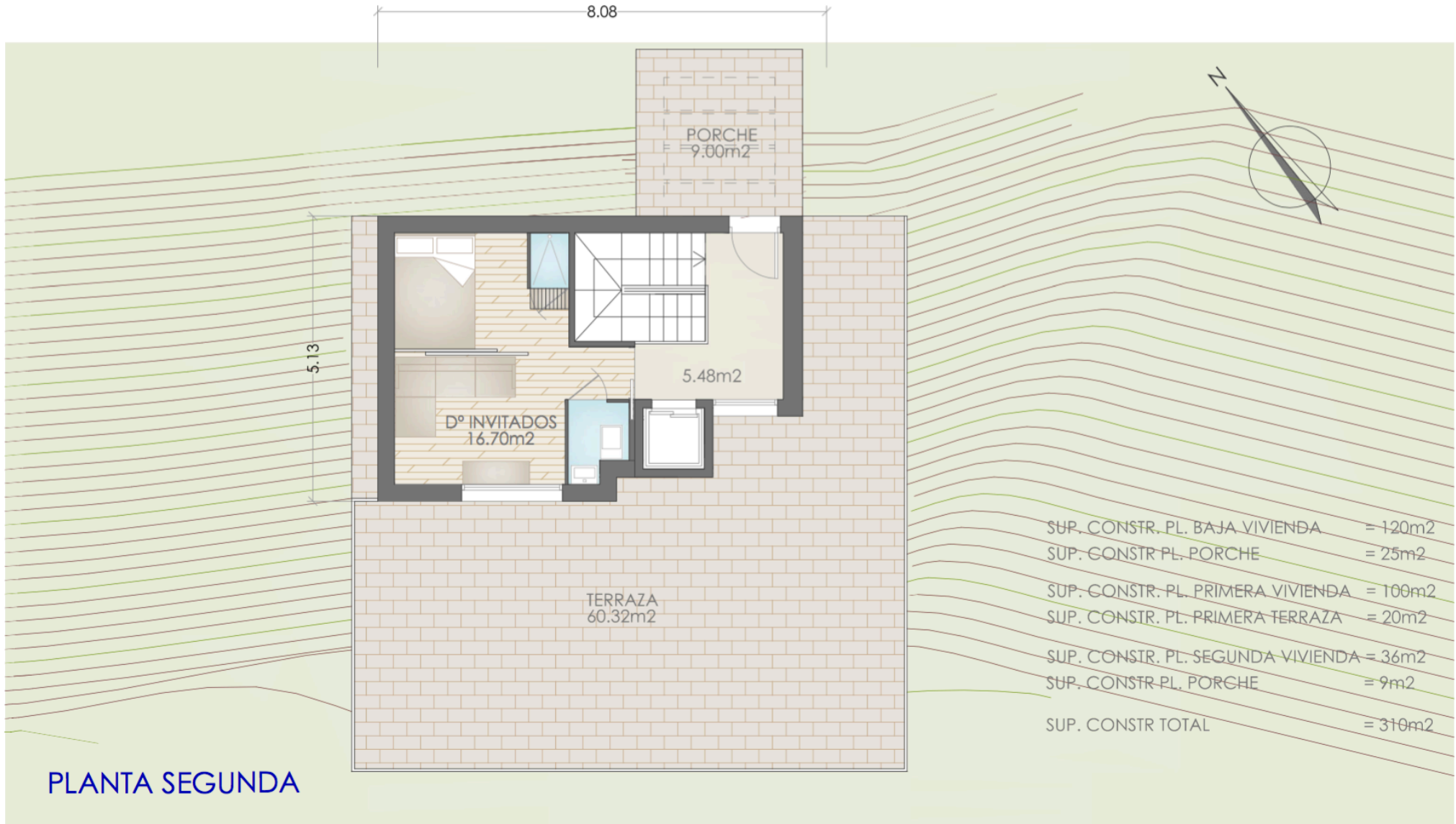
PLANTA BAJA

SUP. CONSTR. PL. BAJA VIVIENDA	= 120m ²
SUP. CONSTR. PL. PORCHE	= 25m ²
SUP. CONSTR. PL. PRIMERA VIVIENDA	= 100m ²
SUP. CONSTR. PL. PRIMERA TERRAZA	= 20m ²
SUP. CONSTR. PL. SEGUNDA VIVIENDA	= 36m ²
SUP. CONSTR. PL. PORCHE	= 9m ²
SUP. CONSTR. TOTAL	= 310m ²



PLANTA PRIMERA

SUP. CONSTR. PL. BAJA VIVIENDA	= 120m ²
SUP. CONSTR. PL. PORCHE	= 25m ²
SUP. CONSTR. PL. PRIMERA VIVIENDA	= 100m ²
SUP. CONSTR. PL. PRIMERA TERRAZA	= 20m ²
SUP. CONSTR. PL. SEGUNDA VIVIENDA	= 36m ²
SUP. CONSTR. PL. PORCHE	= 9m ²
SUP. CONSTR. TOTAL	= 310m ²



PLANTA SEGUNDA